

ANGEL BUNNY

(LARGE - APPROX. 7" TALL)
(SMALL - APPROX. 5 1/2" TALL)

SUPPLIES:

LARGE ANGELS - FOR 4

MUSLIN - 1/4 YD.
DRESSES - 3/4 YD. COTTON
RIBBON 1/8" - 2 YDS.
STUFFING
THREAD
EMBROIDERY FLOSS - BLACK & PINK
BLUSH, IF DESIRED
OPTIONAL LACE - 2 YDS

SMALL ANGELS - FOR 4

MUSLIN - 1/4 YD.
DRESSES - 1/4 YD. COTTON
RIBBON 1/8" - 1 1/2 YDS.
STUFFING
THREAD
EMBROIDERY FLOSS - BLACK & PINK
BLUSH, IF DESIRED
OPTIONAL LACE - 1 1/4 YD.

WINGS

MUSLIN (1/8 YD.),
BATTING (1/8 YD.),
TRANSFER WEBBING
CONTRASTING QUILTING THREAD

1/4" SEAMS INCLUDED UNLESS OTHERWISE INDICATED
RST = RIGHT SIDES TOGETHER

READ ALL DIRECTIONS BEFORE STARTING

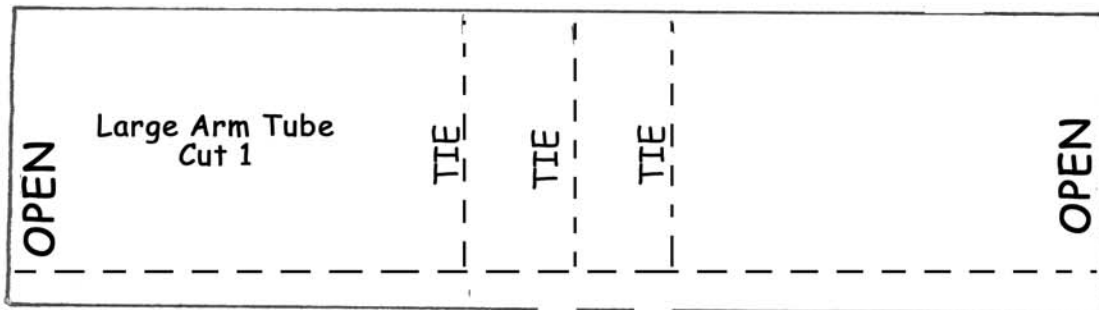
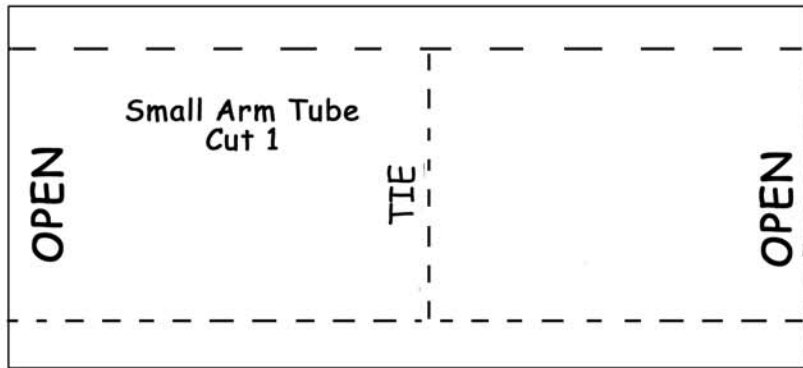
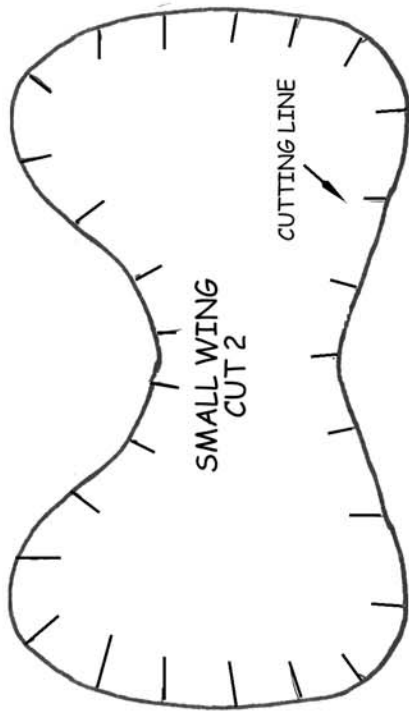
NOTE: SINCE BODY AND LEG PATTERNS ARE SO SMALL, IT IS EASIER TO SEW THEM ACCURATELY IF YOU TRACE THE PATTERN PIECES ON MUSLIN, THEN USE THESE LINES AS SEWING LINES. I USE A SHARP PENCIL, OR A DISAPPEARING QUILTER'S PEN. BE SURE TO LEAVE 1/4" AROUND ALL SIDES WHEN YOU CUT THEM OUT.

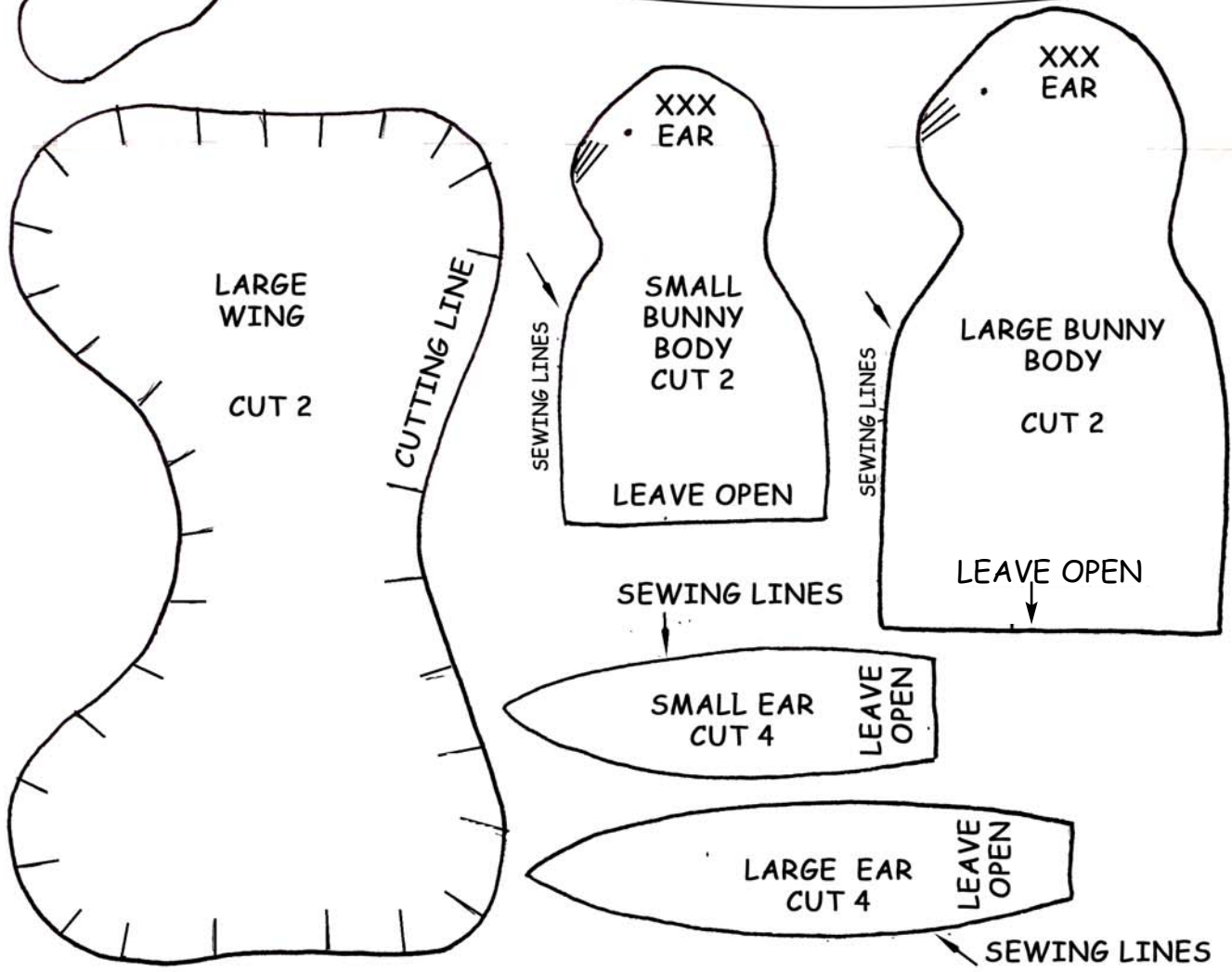
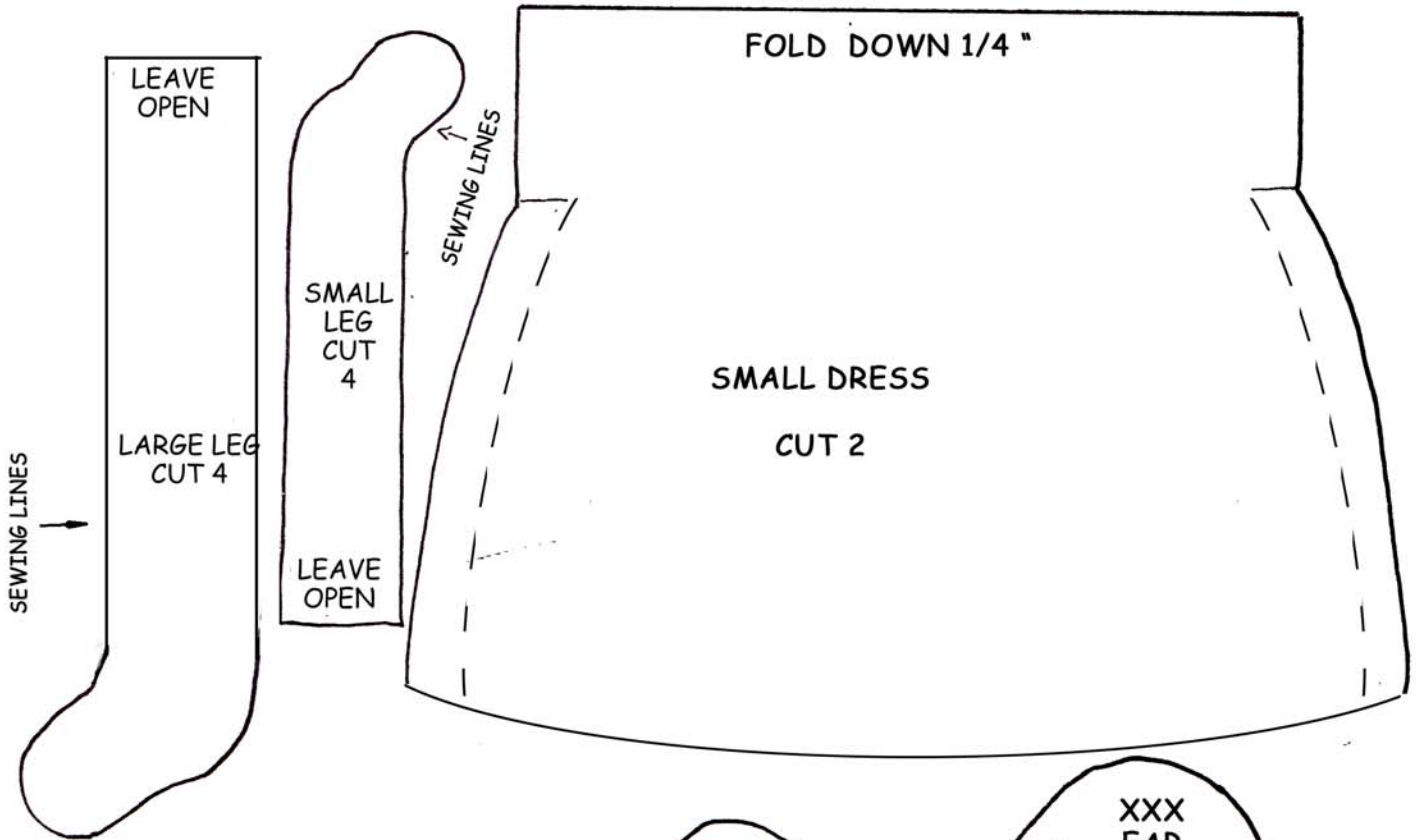
LARGE ANGEL BUNNY TRACE AROUND BODY, LEGS AND EARS. CUT OUT 1 ARM TUBE AND SET ASIDE. STITCH AROUND BODY, LEGS AND EARS, LEAVING OPEN WHERE INDICATED. CUT OUT, CLIP CURVES AND TURN. PRESS EARS. STUFF BODY AND WHIPSTITCH CLOSED. STUFF FEET ONLY AND SEW LEGS TO BODY BOTTOM. FOLD UNDER 1/4" AT TOP OF EARS, FOLD THEM IN HALF LENGTHWISE, AND TACK TO SIDES OF HEAD. MAKE FRENCH KNOTS FOR EYES, USING 3 STRANDS OF BLACK FLOSS. MAKE NOSE USING A SATIN STITCH AND 3 STRANDS OF PINK FLOSS. BLUSH CHEEKS, IF DESIRED. FOLD ARM TUBE LENGTHWISE AND STITCH LONG EDGE. TURN, TIE CENTER TIGHTLY WITH A LENGTH OF THREAD. STUFF A SMALL BALL OF STUFFING INTO EACH SIDE AND TIE ANOTHER THREAD BESIDE STUFFING TO MAKE HANDS. SET ASIDE AGAIN. CUT OUT DRESS WITH SHOULDERS ON FOLD. CUT SLASHES FOR NECK HOLE. RST, STITCH SIDE SEAMS. CLIP CURVES, TURN AND RUN GATHERING THREADS AROUND EACH SLEEVE, 1/2" UP FROM RAW EDGE. DO NOT TIGHTEN UP YET. SLIP DRESS ON DOLL. PUT ARM TUBE THROUGH EACH SLEEVE, LIFT UP DRESS, AND TACK ARM TUBE TO EACH SIDE OF BODY. TIGHTEN UP GATHERING THREADS, SECURE. TAKE A TUCK IN THE FRONT AND BACK OF NECKLINE, AND SECURE AT EACH SIDE OF NECK. CHOOSE WING STYLE AND ATTACH DOLL TO WINGS.

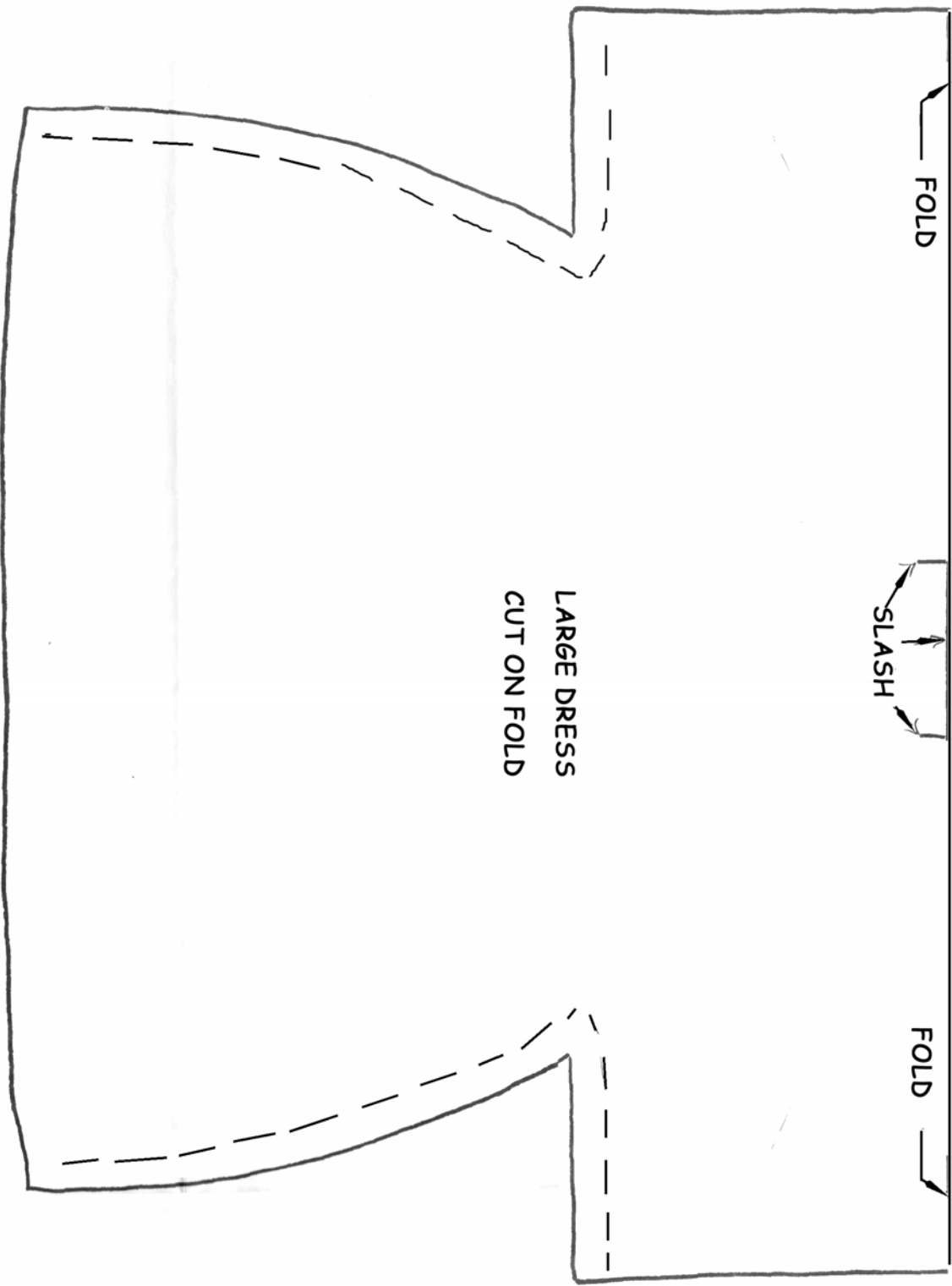
SMALL ANGEL BUNNY CUT, STITCH AND ASSEMBLE SMALL BUNNY AS YOU DID LARGE BUNNY, OMITTING DIRECTIONS FOR ARMS. FROM DRESS FABRIC, CUT OUT 2 DRESS PIECES, AND 1 ARM TUBE. FOLD ARM TUBE LENGTHWISE, RST, AND STITCH DOWN LONG EDGE. TURN AND TIE A THREAD TIGHTLY IN CENTER. PLACE A TINY AMOUNT OF STUFFING INTO EACH SIDE OF TUBE. TACK EACH END OF TUBE TO SIDE OF BUNNY. STITCH DRESS ONLY UP TO LINE INDICATED ON PATTERN. TURN AND FOLD UNDER 1/4" AT TOP OF DRESS AND PRESS LIGHTLY. PUT DRESS ON BUNNY AND THEN RUN A GATHERING THREAD AROUND NECKLINE TO GATHER. TIGHTEN AND SECURE. TIE RIBBON AROUND CENTER OF ARM TUBE.

IF YOU ARE MAKING A HANGING BUNNY ANGEL, YOU MAY CHOOSE TO OMIT LEGS, AND STITCH LACE TO DRESS BEFORE PUTTING ON DOLL.

WINGS USING FUSIBLE WEBBING, FUSE MUSLIN TO BOTH SIDES OF BATTING. CUT OUT WINGS AND ADD DECORATIVE HAND STITCHING TO OUTSIDE EDGE WITH QUILTING THREAD. TACK TO DOLL.







FOLD

SLASH

FOLD

LARGE DRESS
CUT ON FOLD